

wybone

Mental Health Bin

A purpose-designed waste unit for use in hospitals and clinical settings where added safety and security is required.



Call: 01226 744010

Web: www.wybone.co.uk

Email: sales@wybone.co.uk

The Mental Health Sackholder

- Foot pedal and chute operation
- Restricted access to contents
- Secured with two locks
- All moving parts enclosed
- Anti-microbial coated
- Includes bracket for wall fixing



A small unit ideal for bathrooms and smaller patient rooms.



A mid-sized unit ideal for smaller treatment rooms and communal areas.



A large unit ideal for high volumes of waste.

Technical Data

Size	28 litre	42 litre	80 litre
Width	210mm	466mm	466mm
Depth	340mm	390mm	390mm
Height	640mm	570mm	847mm



We've been supplying to the NHS since 1998

It's a partnership we're extremely proud of. And you can find plenty of our Mental Health Bins in most hospitals up and down the country.

The NHS change lives. And when we're able to give back, we do. Here are some of our most memorable NHS projects:

- During the first Covid-19 lockdown, we focused all our efforts on providing the NHS with PPE bins. From 16th March to the 10th of July, we delivered around 13,000 of our capsule units and 16,000 RFG products.
- We delivered over 3000 bins in just five weeks to the new Royal Liverpool University Hospital.
- In 2011, we delivered over 8,000 bins to The Royal London Hospital.
- We supplied 1,100 sackholders to Balfour Hospital in 2019 during its construction. This hospital is Scotland's first net-zero hospital.



Mental Health Sackholders

This Mental Health Sackholder has been specifically designed for use in areas where patient security is of paramount importance. Available in a 42 litre or 80 litre capacity, the bin operates with a chute system to ensure that there can be no access to the contents.

The chute is operated via the foot pedal and has a hands free frame with a push lock fitted to the centre for added safety. The bin comes with a choice of body colour and the lids and foot pedals can be colour coded to match any waste stream.



1YR PARTS & LABOUR
GUARANTEE

All of our products come with a 1 year parts and labour guarantee as standard.



Available sizes

28
LITRES

42
LITRES

80
LITRES

Available body colours



White



42
LITRES

A mid-sized unit ideal for smaller treatment room and communal areas.



28
LITRES

A slimline unit giving excellent capacity to size ratio with a generous waste aperture.

Choose your lid colour



Black



Yellow



Orange



White



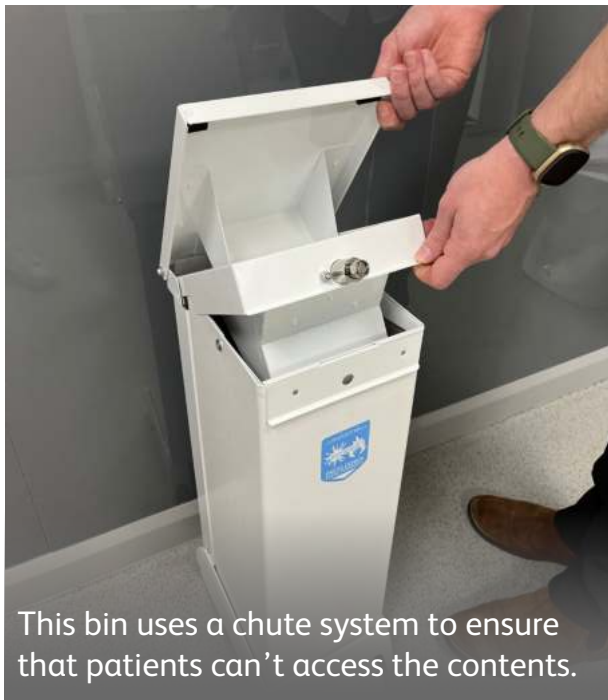
Green



Stripe

Call: 01226 744010
Email: hello@wybone.co.uk
Buy online: www.wybone.co.uk

Discounted NHS Pricing available



This bin uses a chute system to ensure that patients can't access the contents.



The chute is operated via a plastic foot pedal.



Sturdy, reliable sack retention frame to keep liners correctly installed.



Safety locks are included to prevent unwanted access.



Coated with anti-microbial to prevent the spread of harmful bacteria.